



# GREEN BUILDING PRODUCTS



# SCG SUSTAINABLE DEVELOPMENT

Since established in 1913 following a royal decree of His Majesty King Rama VI to produce cement, the main building material for infrastructure projects that greatly contributed to the progress of the country during that period, SCG has been conducting business according to the guidelines of sustainable development and surpassing the 100th anniversary while learning, adjusting, and developing itself continuously. SCG has been diligently inventing products, services, businesses, and work environments while establishing balance between economic, social, and environment in addition to conforming to good corporate governance. SCG's continuous determination and dedication are our commitment beyond our longstanding tradition to serve as a sustainable business leader in ASEAN

Following our determination to sustainable development, SCG has been honored with the Sector Leader in the Building Materials & Fixtures for a fourth consecutive year (2011-2014) from Dow Jones Sustainability Indexes (DJSI), a global sustainable best practice ranking index for global leading companies by evaluating aspects of economic, social, and environment. SCG is the only company in ASEAN to be honored a Sector Leader rank and also is classified in the Gold Class, the highest class, for the seventh consecutive year since 2008.



“ SCG continues to conduct the business alongside a commitment in sustainable development through the systematic environmental management in all business operations: doing research & development on environmentally friendly products and services; promoting environmental awareness; and continually implementing environmental conservation programs. ”



# CONTENT





## GREEN STANDARDS

### GREEN BUILDING STANDARDS

6

- LEED
- TREES

### GREEN PRODUCT STANDARDS

12

#### SCG Product Accreditation

- SCG eco value
- Green Label
- Carbon Reduction
- Carbon Footprint
- WaterMark
- WELS
- MS Mark
- CE Marking



## SCG PRODUCTS FOR GREEN BUILDING

16

### STRUCTURE

- Cement 18
- Masonry 19
- Steel 20

### ARCHITECTURE

#### Thermal & Moisture Protection

- Roofing 21
- Ceiling & Wall 25
- Heat & Sound Insulation 27

#### Finishes

- Surface Covering 29

#### Specialties

- Bathroom & Kitchen 32

#### Turf and Grasses

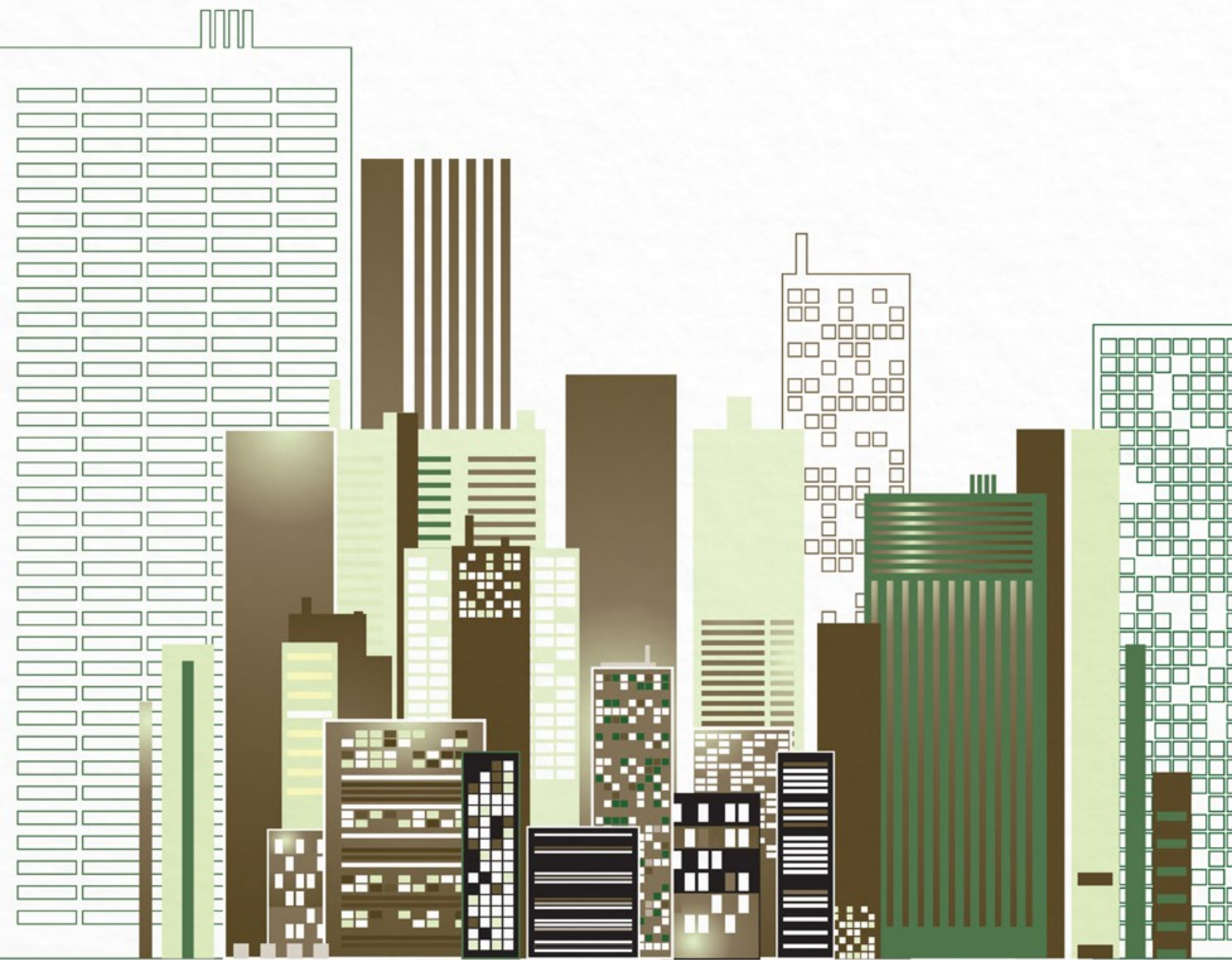
- Landscape 34



## SCG PRODUCTS CONTRIBUTE TO GREEN BUILDING STANDARDS TABLE

38

# GREEN BUILDING STANDARDS





## Green Building Standard

Green building has been considered as a practical way in the sustainable development of architecture. To be qualified, a building must meet the criteria of green building standard, which is a tool to assess how environmentally-friendly the building is. The standard mainly addresses the efficiency of natural resource utilization, which includes energy, water, material selection and waste management strategy, in order to eliminate negative impacts to both tenants and environment. Although green building standards have been launched in many countries across the globe, details of each standard may differ depending on the appropriateness to each country.

In recent years, many green building standards have been accredited in Thailand, such as LEED and TREES.



# LEED


## LEADERSHIP IN ENERGY AND ENVIRONMENTAL DESIGN

LEED is a green building certification program that recognizes best-in-class building strategies and practices about energy and environmental. It has been established in 1993 by U.S. Green Building Council (USGBC), The United State of America.

### The level of LEED certification



#### LEED Credit categories (Version 2009) \*

-  Sustainable Site : SS
-  Water Efficiency : WE
-  Energy & Atmosphere : EA
-  Materials & Resources : MR
-  Indoor Environmental Quality : IEQ
-  Innovation in Design : ID
-  Regional Priority : RP

#### LEED Rating System

- LEED for New Construction, Core & Shell, School, Major Renovations
- LEED for Existing Buildings: Operation and Maintenance
- LEED for Commercial Interiors
- LEED for Retail
- LEED for Neighborhood Development
- LEED for Homes
- LEED for Healthcare

\* Reference: LEED Reference Guide for Green Building Design & Construction For the Design, Construction and Major Renovations of Commercial & Institutional Building including Core & Shell and K-12 School Projects 2009 Edition.



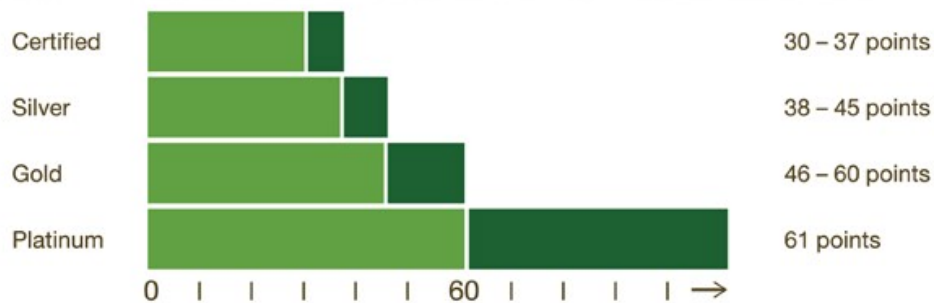


# TREES

## THAI'S RATING OF ENERGY AND ENVIRONMENTAL SUSTAINABILITY

Energy and environmental sustainability rating system for building and architecture of Thailand developed in 2012 by Thai Green Building Institute (TGBI) which is the collaboration between The engineering Institute of Thailand Under H.M. The King's Patronage and The Association of Siamese Architects Under Royal Patronage

### The level of TREES certification.



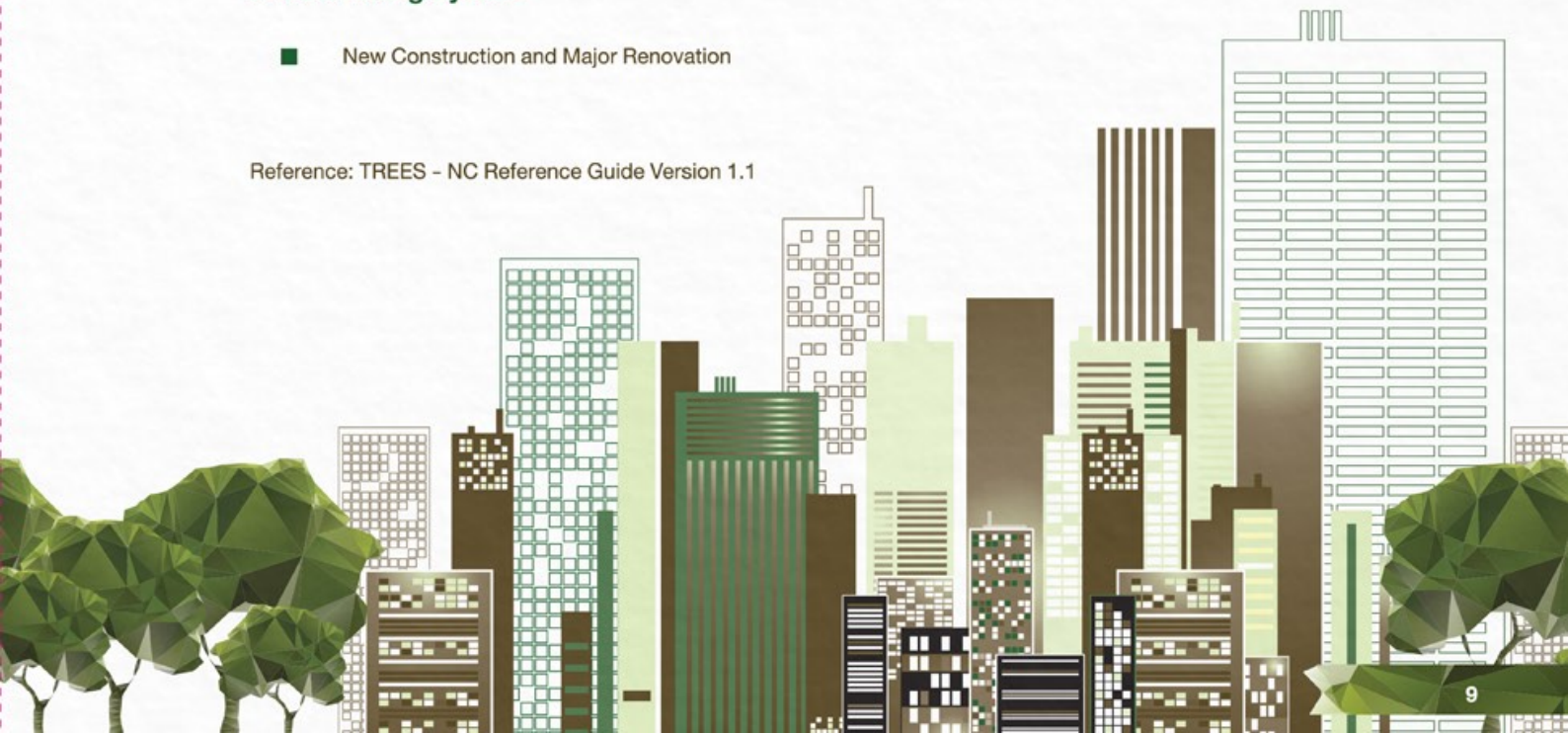
### TREES Credit categories

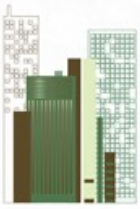
- |                         |                                |
|-------------------------|--------------------------------|
| 1 Building Management   | 5 Materials and Resources      |
| 2 Site and Landscape    | 6 Indoor Environmental Quality |
| 3 Water Conservation    | 7 Environmental Protection     |
| 4 Energy and Atmosphere | 8 Green Innovation             |

### TREES Rating System

- New Construction and Major Renovation

Reference: TREES - NC Reference Guide Version 1.1





# GREEN BUILDING IN THAILAND

## SCG 100<sup>th</sup> Year Building, Bangkok, Thailand

LEED Platinum: BD+C: v2009



## SCG Head Office Building 1&2 and Building 5, Bangkok, Thailand

ASEAN's 1<sup>st</sup> LEED Platinum: O+M: Existing Buildings v2009



FIND OUT MORE:

[vn.scgbuildingmaterials.com/scg-green-building-solution](http://vn.scgbuildingmaterials.com/scg-green-building-solution)



## Starbucks Porto Chino, Samut Sakhon, Thailand



Asia's 1<sup>st</sup> LEED Gold: ID+C: Commercial Interiors v2.0



## Showroom Toyota – Thaiyen, Pak Chong, Nakhon Ratchasima

Thailand's 1<sup>st</sup> TREES Gold: New Construction and Major Renovations v1.1



# GREEN PRODUCT STANDARDS

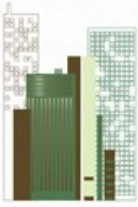




## Green Product Standard

In addition to green building standards for evaluate the environmental friendliness of buildings. Also have standard criteria for evaluate products that are environmentally friendly. This criteria is process from design, manufacturing, packaging, transportation, use and disposal of end-use. By institutions or organizations, both national and international accredited products that meet the conditions of them.

SCG commits on developing products to be certified by various institutions and organizations in compliance with sustainable development in environment, safety, health, and social support such as : SCG Eco value, Green Label, Carbon Label, Water Mark, WELS, MS mark and CE Marking



# SCG PRODUCT ACCREDITATION



## SCG eco value

Based on the concept of sustainable development, business operations which emphasizes on the importance of environmental protection in order to improve the well-being of people. SCG has actively pursued the green earth concept by setting environmental standards for the certification of products and services of SCG group as well as building customer confidence through SCG's accreditation labels of environmentally-friendly products and services named "SCG eco value"

SCG eco value is represented as a Self – Declared accredited label on products or services with better concerns for eco-friendly production means or applications upon compared with other commodity

### **SCG eco value products or services must have these following properties.**

1. Products or services which are proven to have eco-friendly qualifications according to Third Party Eco Label
2. Products or services which have at least one better eco-friendly qualification upon compared with common product in accordance with SCG eco value criteria.

In order to make quantitative data of the labeled product or service trustworthy, SCG has developed the criteria according to ISO 14021 (Environmental labels and declarations- Self-declared environmental claims : Type II Environmental Labelling) and the development guideline for SCG eco value product or service, taking into account stakeholders' benefit.

### **SCG eco value product or service is divided into two types.**



#### **PROCESS**

Eco process means Environmentally-friendly manufacturing process of products or services



#### **USE**

Eco Use means Environmentally-friendly using of products or services





## GREEN LABEL

“Green Label” is a label granted to quality products that are shown to have minimum impact to the environment in comparison to other products with the same functionality. This label keeps the consumers informed that the products are valued for environment.



## CARBON REDUCTION

Carbon Reduction is a label to products those are manufactured with minimal greenhouse gases emission



## CARBON FOOTPRINT

Carbon Footprint is a label to show the amount of greenhouse gas emitted by a product throughout its life. Since the acquisition of raw materials, transportation, assembly, deployment and management of products after use. Calculated in the form of carbon dioxide equivalents



## WaterMark

relating to water supply, sanitary ware, and drainage goods. The WaterMark label is certified by Standards Australia Limited in Australia. WaterMark is an industrial standard certification trademark



## Water Efficiency Labelling & Standards (WELS) Scheme

WELS is a label that shows product's ability to save water. More number of stars means higher water efficiency as approved by Australian Government.



## MS Mark

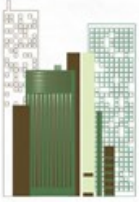
Products imported into Malaysia must comply with Malaysia Standard (MS Mark) as approved by Standards and Industrial Research Institute of Malaysia



## CE Marking (CONFORMITE' EUROPE'ENE)

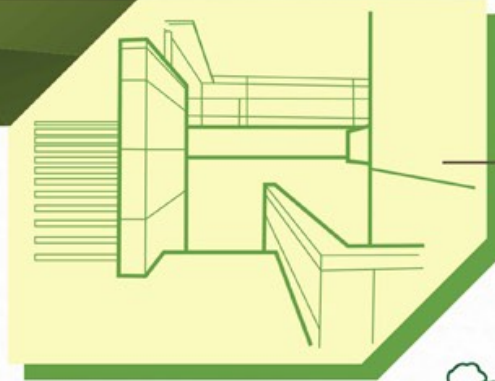
For a product designed and manufactured with safety standards as required by EU regulations and standards prepared by the product standard division of the EU.

# SCG PRODUCTS FOR GREEN BUILDING

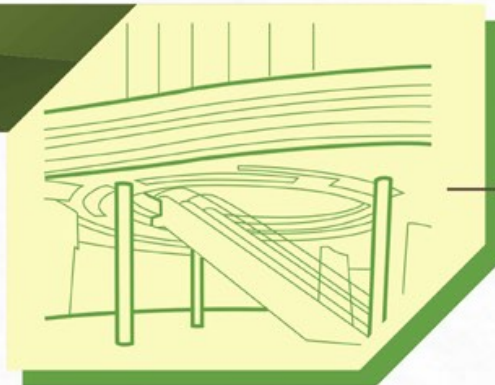


## STRUCTURE

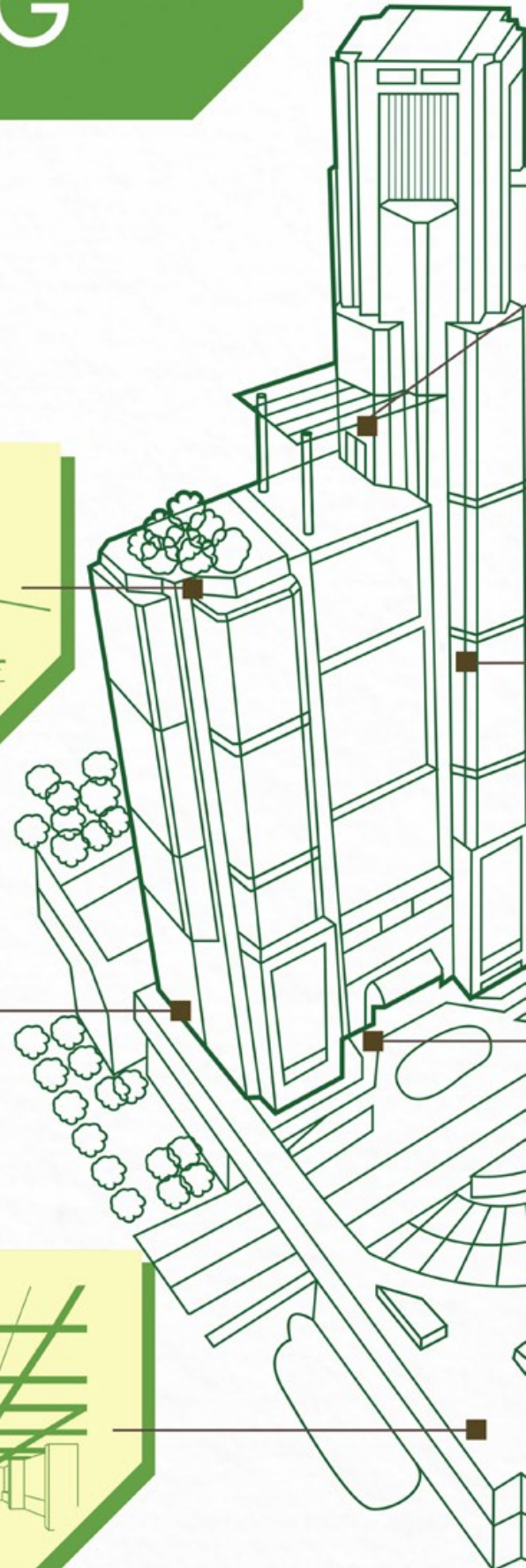
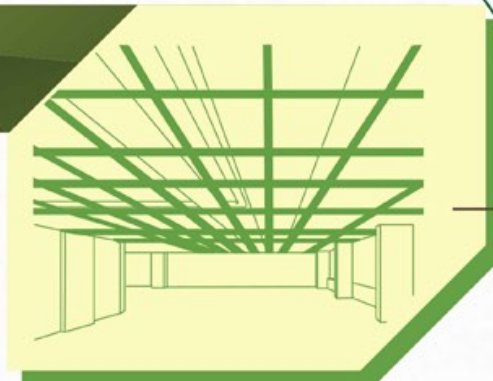
### CEMENT

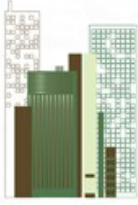


### MASONRY

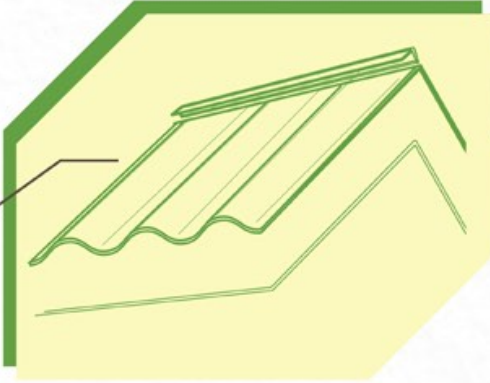


### STEEL



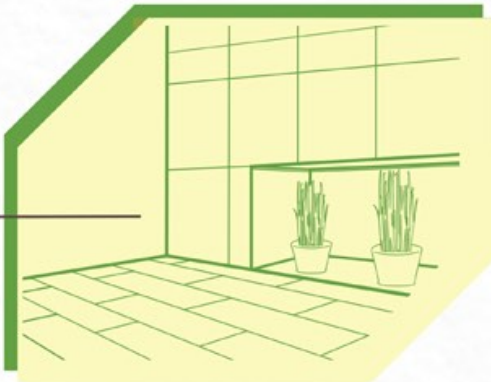


# ARCHITECTURE



## THERMAL & MOISTURE PROTECTION

- ROOFING
- HEAT & SOUND INSULATION
- CEILING & WALL



## FINISHES

- SURFACE COVERING



## SPECIALTIES

- BATHROOM & KITCHEN

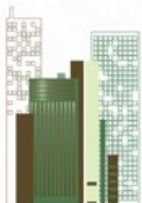


## TURF & GRASSES

- LANDSCAPE

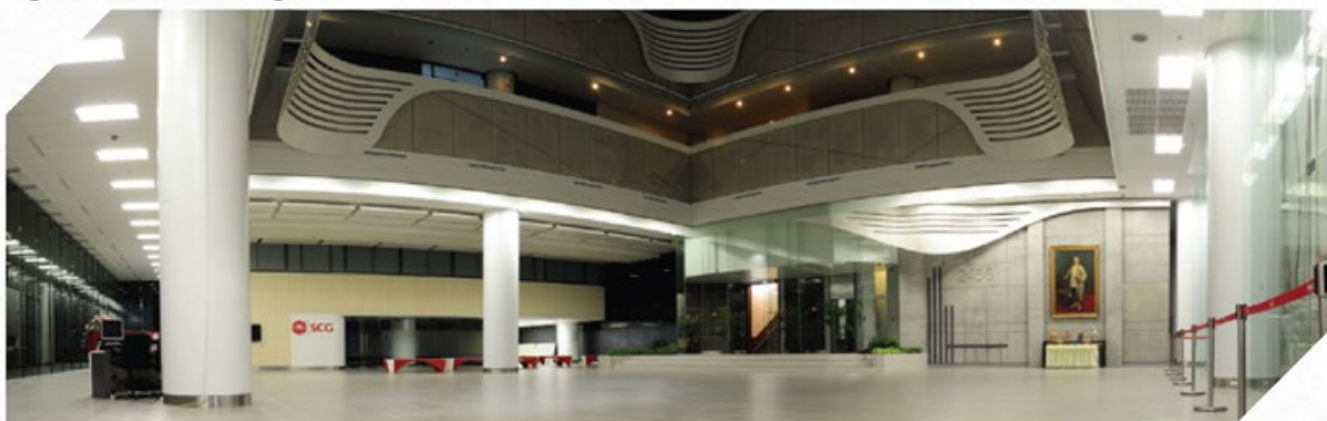
# SCG GREEN PRODUCTS

Since a good building provides good quality of life for its occupants, the Green Building is considered to be another form of sustainable development in order to meet occupant's needs for a good quality of life. For this reason, SCG is determined to develop product innovations that provide solutions for Green Building uses in order to build user confidence, conserve energy, and protect the environment.



## STRUCTURE

In Thailand, the material used for building structures is mainly reinforced concrete because it is material that can be designed to support loads according to purpose of use. Besides, the secondary material is the structural steel. Selection of the structure is subject to the condition of engineering design of such building.



## TRA CHANG CEMENT/PORTLAND CEMENT TYPE

## CEMENT

AVAILABLE IN VIETNAM

SCG Portland cement (Type I) provides high rigidity and compressive strength that suitable for high – strength and large – sized structures. Biomass fuel is used in the production process and recycled hot air remaining from the production process is used to produce electricity for the factory.



### Green Standard Contribution

LEED Criteria

MR5 : Regional Materials

TREES Criteria

MR5 : Regional Materials

MR6 : Low environmental impacts materials

Eco Label



Portland Cement Type 1



Hybrid Cement



Precast Cement



Portland Pozzolan Cement



Portland Blast Furnance Slag Cement



Portland Cement Type 3

# CPAC READY MIXED CONCRETE

AVAILABLE IN VIETNAM 

This product is suitable for general structures, road works, building both interiors and exteriors. Materials produced in Thailand are selected to be used as the main components. In addition, marine concrete and CPAC freezing room concrete, have been developed to have special properties that last longer than general concrete and are also available.



## Green Standard Contribution



### LEED Criteria

- SS7.1 : Heat Island Effect - Non Roof
- MR4 : Recycled Content
- MR5 : Regional Materials

### TREES Criteria

- SL5 : Reduce Heat Island Effect
- MR4 : Recycled Content
- MR5 : Regional Materials

### Eco Label



CPAC Conventional Concrete



CPAC Marine Concrete



CPAC Self-Compacting Concrete



CPAC Freezing Room Concrete

# Q-CON

IMPORTED FROM THAILAND 

# MASONRY

Lightweight Concrete has a weight 2-3 times lighter than that of antique brick and can prevent heat 4-8 times better than antique brick. In addition, it can also prevent and absorb noise better than antique brick.



## Green Standard Contribution



### LEED Criteria

- EA1 : Optimize Energy Performance
- MR5 : Regional Materials

### TREES Criteria

- EA1 : Optimize Energy Performance
- MR5 : Regional Materials



Q-Con Block



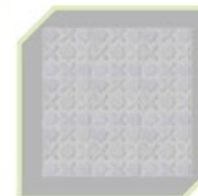
Q-Con Wall Panel



Q-Con Easy Wall



Q-Con lintel



Q-Con Decorating Wall



Q-Con Sound Barrier

With superior quality, process standard controlled by SCG to ensure that Structure from this product has a maximum strength



### Green Standard Contribution

#### LEED Criteria

- MR4 : Recycled Content
- MR5 : Regional Materials

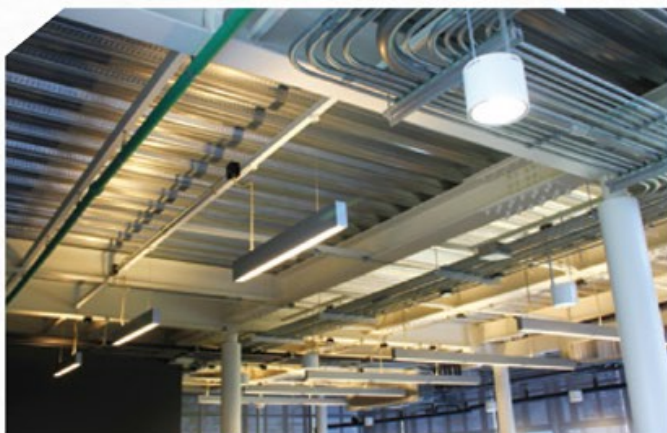
#### TREES Criteria

- MR4 : Recycled Content
- MR5 : Regional Materials



# STRUCTURAL STEEL

All products are made of the best quality raw materials, free from radio-activity and strictly control the qualification and quality complying with the high standard through the production process. We can serve every demand of structural work, support every design in every single field, make your buildings look modern, sophisticate, and unique.



### Green Standard Contribution

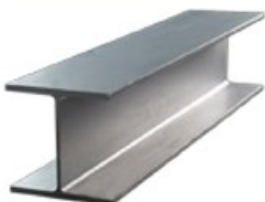
#### LEED Criteria

- MR4 : Recycled Content
- MR5 : Regional Materials

#### TREES Criteria

- MR4 : Recycled Content
- MR5 : Regional Materials
- MR6 : Low environmental impacts materials

#### Eco Label



H-BEAM



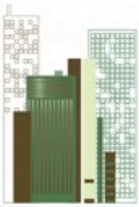
CUT-BEAM



CHANNEL



ANGLE



# ARCHITECTURE

Construction materials used for architectural work includes the interior work, which consists of building envelope, surface covering, special utility area (bathroom, kitchen, etc.) and materials used for Landscape Architecture.

## THERMAL & MOISTURE PROTECTION



### ROOFING

Since the roof is the part of building that is most directly exposed to sunlight all day long, the selection of roof color with High Solar Reflectance Index can help to reduce the Heat Island Effect and also contribute to the reduction of energy consumption in the building



# CONCRETE ROOF TILES

AVAILABLE IN VIETNAM 

Stylish and elegant concrete roof tiles, which are exquisitely designed in terms of both pattern and color, reflects unique taste and style.



## Green Standard Contribution



### LEED Criteria

SS7.2 : Heat Island Effect – Roof

MR5 : Regional Materials

### TREES Criteria

SL5 : Reduce Heat Island Effect





MR5 : Regional Materials

MR6 : Low environmental impacts materials

### Eco Label



CPAC Monier

-  Green Field
-  Bright Jade
-  Coral Pink
-  Butter Cup Yellow

-  White
-  Visatesuk Grey
-  Sunshine Glory
-  Tawny Brick
-  Sunrise
-  Brilliant Red



Prestige

-  Classic Grey
-  Shiny Brown
-  Chateau Brick



Oriental

-  Pearl
-  Brick



Neustile

-  Grey Granite

# CERAMIC ROOF TILES

AVAILABLE IN VIETNAM 

These elaborately manufactured ceramic roof tiles have smooth texture and attractive colors that will not fade away as time goes by.



## Green Standard Contribution



### LEED Criteria

SS7.2 : Heat Island Effect – Roof

MR5 : Regional Materials

### TREES Criteria

SL5 : Reduce Heat Island Effect

MR5 : Regional Materials

MR6 : Low environmental impacts materials

### Eco Label



Excella Classic

-  Green Peridot
-  White Pearl
-  Diamond Grey
-  Yellow Sapphire
-  Green Jadeite
-  Ocean Blue
-  Natural Beige
-  Timber Brown



Excella Grace

-  Evergreen
-  Sunrise
-  Sandy
-  Antico
-  Terracotta
-  Brownish
-  Ionic



Excella Modern

-  White Matt
-  Silver Grey
-  Copper Brown
-  Platinum
-  Ivory Brown
-  Peach Brown

# FIBER CEMENT ROOF TILES



Innovative SCG Fiber Cement Roof Tile is safe for health because it is free of asbestos. Therefore, its production process and uses are harmless to humans and the environment. Moreover, it's lightweight product.



## Green Standard Contribution



### LEED Criteria

SS7.2 : Heat Island Effect – Roof

MR5 : Regional Materials

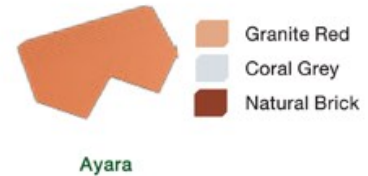
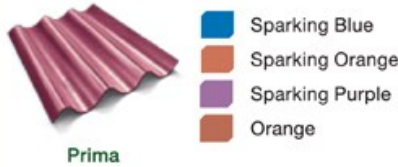
### TREES Criteria

SL5 : Reduce Heat Island Effect

MR5 : Regional Materials

MR6 : Low environmental impacts materials

### Eco Label



# TRANSLUCENT ROOF & PANEL



This product provides brightness and naturally distributes light. These products are made of special polyester resin and high-quality fiberglass with film coating on both sides of their surfaces. They help to reduce heat and prevent ultraviolet rays.



## Green Standard Contribution



### LEED Criteria

MR5 : Regional Materials

IEQ8.1 : Daylight & Views – Daylight

### TREES Criteria

MR5 : Regional Materials

IE4 : Daylight



Color  
Light Transmission

Sky Blue  
65%

Milky White  
56%

Andaman  
50%

Light Brown  
40%

Orange  
40%





# CEILING & WALL

The building wall is considered as a main part of building envelope that transfers heat from outside to inside of the building. Therefore, the selection of wall materials with suitable properties will contribute to efficient use of energy in the building in terms of less use of structural materials and reduce of energy consumption.



## SCG SmartBOARD



Asbestos-free and a new generation of fiber cement material with FIRM & FLEX Technology made the board to gain strength, durability and elasticity in one time. SCG SmartBOARD, with state-of-the-art composition of Elephant (SCG) Portland Cement, Silica and Special cellulose fiber through Autoclave process.



### Green Standard Contribution



#### LEED Criteria

- EA1 : Optimize Energy Performance
- MR 5 : Regional Materials

#### TREES Criteria

- EA1 : Optimize Energy Performance
- MR5 : Regional Materials
- MR6 : Low environmental impacts materials

#### Eco Label



1. Internal and External Ceiling  
Squared Edge, 4-side Tapered Edge, Wood Grain, 3-inch Square Lining
2. Ventilated Ceiling  
Ventilated, Ventilated Wood Grain, Ventilated 3-inch Square Lining
3. Internal and External Wall  
2-side Tapered Edge, Squared Edge, 4-inch Square Lining,  
6-inch Square Lining Wood Grain
4. Underlay
5. Flooring



Specific models of products are certified and contributed with Green Building Standard. Please check with the manufacturer or visit us at [www.greenbuilding-material.com](http://www.greenbuilding-material.com) for further details.

SCG SmartWOOD is a fiber cement wood substitute products of superior quality processes thru a steam and high-pressure system (Autoclave), a part of a technology package that includes the Firm & Flex technology, ensuring that every unit meets SCG's quality standards.



### Green Standard Contribution



#### LEED Criteria

- EA1 : Optimize Energy Performance
- MR5 : Regional Materials

#### TREES Criteria

- SL5 : Reduce Heat Island Effect
- MR5 : Regional Materials
- MR6 : Low environmental impacts materials

#### Eco Label



ไม้ฝา



โทโลเนีย



นิวอิงแลนด์



เนเชอรัล



คลาสสิก



รองพื้น



ซีเมนต์



สีประกายเงา





# HEAT & SOUND INSULATION

The use of heat & sound insulation materials to increase the efficiency of protection against outside heat is considered as another way to reduce the energy consumption and create good environment suitable for the full utilization of the building.



## SCG HEAT INSULATION



Low thermal conductivity insulation to reduce heat in the building, incombustible material, which does not cause fire. Moreover, this product has been certified by TIS 486,487.



### Green Standard Contribution



#### LEED Criteria

- EA1 : Optimize Energy Performance
- MR4 : Recycled Content
- MR5 : Regional Materials

#### TREES Criteria

- EA1 : Optimize Energy Performance
- MR4 : Recycled Content
- MR5 : Regional Materials
- MR6 : Low environmental impacts materials

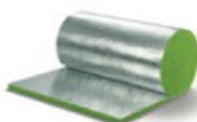
#### Eco Label



UBB Unfaced Blanket



FSO



CRB



Super Cool



STAY COOL

The innovation in acoustic materials used for noise protection or noise control can create good atmosphere and environment in building. In addition, this product reduces noise inside and outside the building.



### Green Standard Contribution

#### LEED Criteria

- MR4 : Recycled Content
- MR5 : Regional Materials

#### TREES Criteria

- MR4 : Recycled Content
- MR5 : Regional Materials
- MR6 : Low environmental impacts materials

#### Eco Label





## SURFACE COVERING

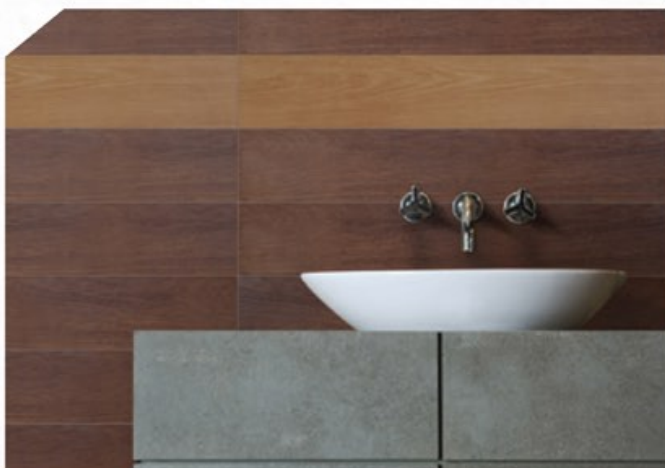
The surface covering like decorative tile is used not only for the decoration in order to enhance aesthetic and to reflect taste and style with creative imagination both inside and outside the building but also represents environmental care by using recyclable materials and regional materials as main component in the manufacturing process.



## COTTO CERAMIC TILES

AVAILABLE IN VIETNAM

COTTO – a leader in ceramic floor and wall tiles is determined to research and develop tiles in the Eco Tiles Collection group and invented the Glazed Porcelain “Eco Touch Series” and “Eco Rockrete Series” ceramic tiles that are high recycled content, durable, stylish, and functional. Beside, with high temperature process makes it have minimize volatile organic compounds content.



### Green Standard Contribution

**PRIME COTTO**

#### LEED Criteria

- MR4 : Recycled Content
- MR5 : Regional Materials
- IEQ4.3: Low Emitting Materials – Flooring System

#### TREES Criteria

- MR4 : Recycled Content
- MR5 : Regional Materials
- MR6 : Low environmental impacts materials

#### Eco Label



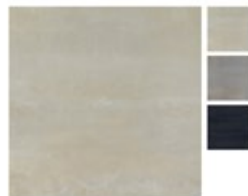
### High Recycled Content Series



Alexander



Bongo



Eco Rockrete



Eco Touch



Jasmine

# SKIMCOAT

AVAILABLE IN VIETNAM 

Moolar Interior/Exterior is a kind of Portland cement-based dry mix. This product is the ideal internal plastering mortar for thin plastering, making smooth surfaces or fixing small cracks bringing smoothness to the wall or ceiling before applying decorative paint.



## Green Standard Contribution

Manufactured abide by TCVN 7329:2014

moolar



EXTERIOR MOOLAR SKIMCOAT



INTERIOR MOOLAR SKIMCOAT

# WHITE CEMENT & MORTAR CEMENT

AVAILABLE IN VIETNAM 

White Tiger is easily blended for softness and smoothness to yield good adhesion, especially a unique blend of high quality White Portland Cement and special admixtures that results in extra white and fine powder that is suitable not only for fixing and grouting tiles but also for casting and sculpturing. And Mortar - High quality ready-to-use cement, in which the user simply puts water, mixes them and uses it immediately. It is available for plastering, masonry, and flooring adjusting purposes.



## Green Standard Contribution

LEED Criteria

MR5 : Regional Materials

IEQ4.2: Low Emitting Materials – Paints & Coatings

TREES Criteria

MR5 : Regional Materials

MR6 : Low environmental impacts materials

IE2 : Non Pollutant Materials

Eco Label



TIGER MORTAR for general brick laying work



TIGER MORTAR for lightweight block laying work



TIGER MORTAR for general brick wall plastering work



TIGER MORTAR for lightweight block wall plastering work



TIGER DECOR Mortar for skim coating work - colors



TIGER DECOR Mortar for skim coating work - white

It contains additives that improves extra ordinary adhesion and therefore provides high adhesive strength. In addition, the extra acid – resistant formula with Ultra Plaster mixture is also available. This product can use in both narrow and wide area with film adhesion and non-cracked seal. It has low Volatile Organic Compounds (VOCs)



### Green Standard Contribution

**PRIME COTTO**

#### LEED Criteria

MR5 : Regional Materials

IEQ4.1 : Low Emitting Materials – Adhesive & Sealant

#### TREES Criteria

MR5 : Regional Materials

MR6 : Low environmental impacts materials

IE2 : Non Pollutant Materials

#### Eco Label



Tile grouting for grouting work



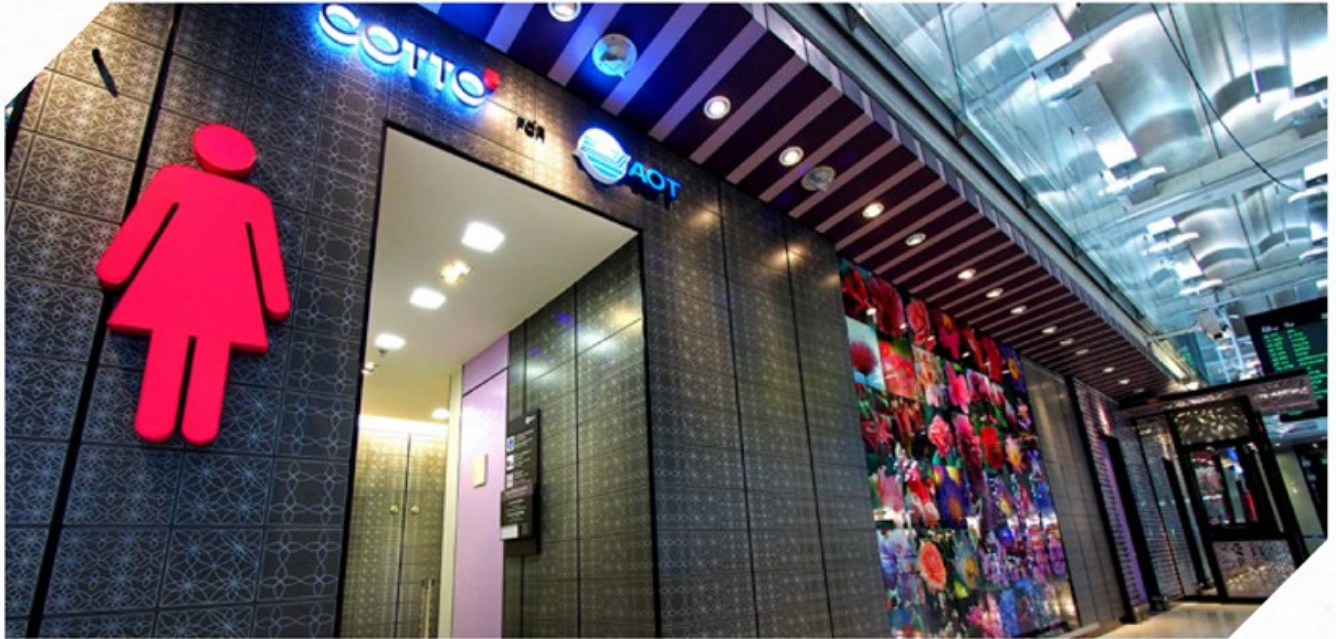
COTTO Tile Grout





## BATHROOM & KITCHEN

Since water is the resource that everybody have to conserve for the next generation, the selection of sanitary wares, showers and faucets for bathrooms and kitchens, which are designed to use water efficiently and to provides greatest benefits for people and environment, is another way to save water.



### Green Standard Contribution

LEED Criteria

WEp1 & WE3 : Water Use Reduction

TREES Criteria

WC1 : Water Use Reduction & Water Efficiency Usage

COTTO

## PUBLIC RESTROOM

IMPORTED FROM THAILAND



### High Efficiency Toilet



Flush Valve Type



Single Flush Type



Two Piece Dual Flush Type

## High Efficiency Urinal



Manual Type



Automatic Type

## Low Flow Faucet



Metering Type



Manual Type

## PRIVATE RESTROOM



## High Efficiency Toilet



Single Flush Type



Dual Flush Type



Dual Flush Type

## Low Flow Faucet



Counter Type



Wall Type

## Shower



Fixed Shower



Hand Shower

## Kitchen Faucet



Counter Type



Wall Type



## LANDSCAPE

The landscape architecture design, which helps to enhance the overall image of the building, is another element of the “Green Building”. The innovation of paving block and vertical garden helps to reduce storm water runoff and heat island effect respectively



## PAVING BLOCK & PAVING TILES



It provides not only durability but also the elegant and unique design according to owner’s imagination.



### Green Standard Contribution



#### LEED Criteria

- SS7.1 : Heat Island Effect – Non Roof
- MR 5 : Regional Materials

#### TREES Criteria

- SL5 : Reduce Heat Island Effect
- MR5 : Regional Materials



Imagination Octa

- Orange
- Blue



Cobble Stone

- Rosy Pink
- Moony Yellow
- Mocca Brown



# POROUS BLOCK & CONCRETE



The innovation, which is designed to provide spaces between concrete textures, allows the permeation of water and, therefore, reduces storm water runoff.



## Green Standard Contribution

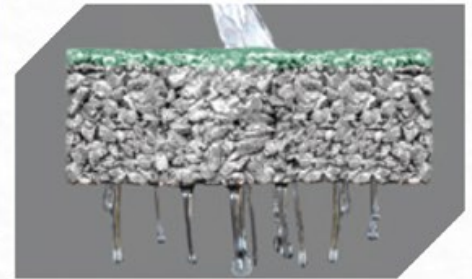


### LEED Criteria

- SS6.1 : Stormwater Design – Quantity Control
- MR 5 : Regional Materials

### TREES Criteria

- SL4 : Reduce Stormwater Runoff
- MR5 : Regional Materials



# PAVING BLOCK : TURF STONE SERIES



Balancing with vitalize from natural and strengthen from concrete. This product has open space more than 50%



## Green Standard Contribution



### LEED Criteria

- SS7.1 : Heat Island Effect – Non Roof
- MR 5 : Regional Materials

### TREES Criteria

- SL5 : Reduce Heat Island Effect
- MR5 : Regional Materials



Vertical garden looks like from nature. Easy & Quick Installation because it is Modular System



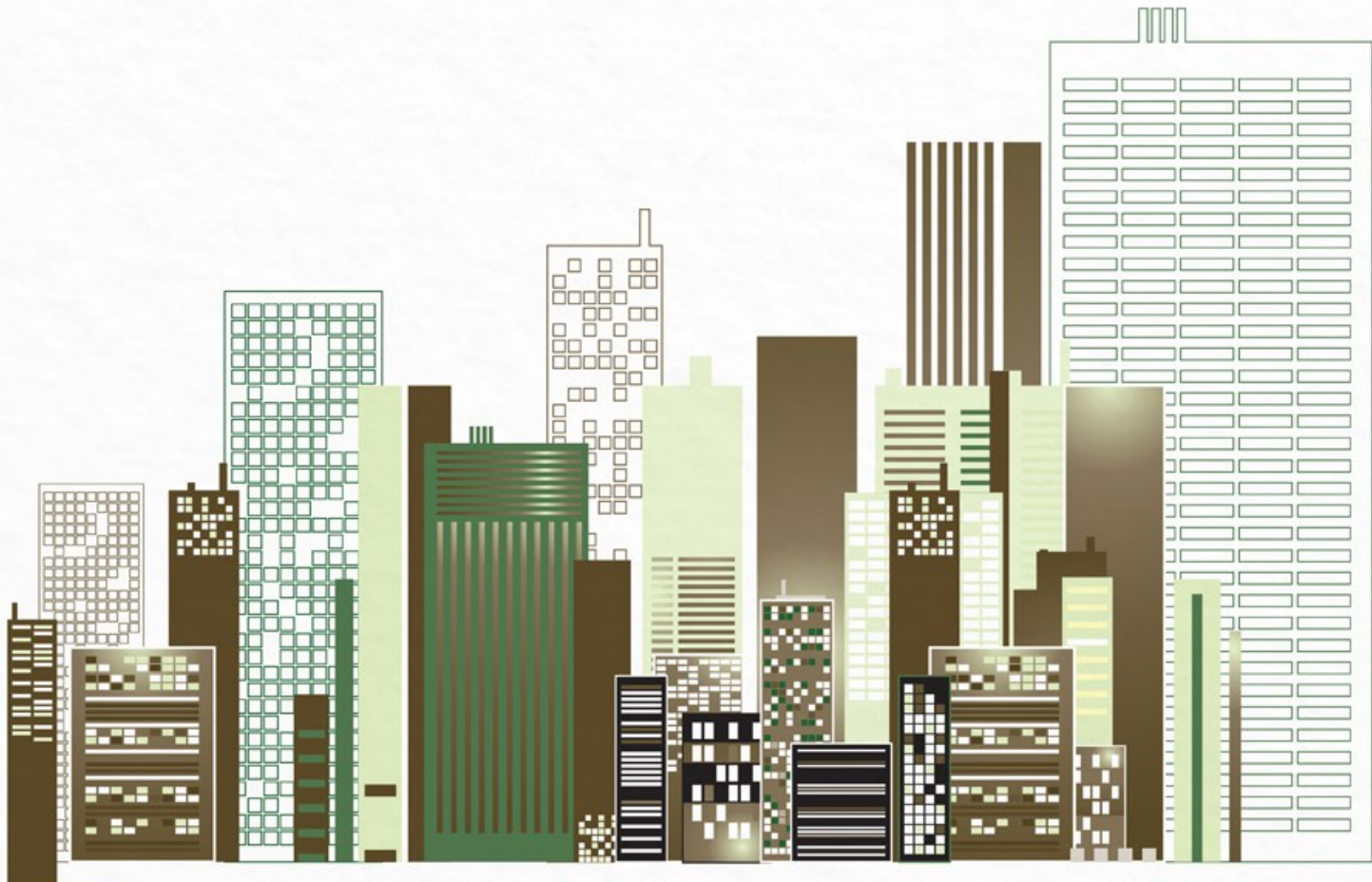
## Green Standard Contribution

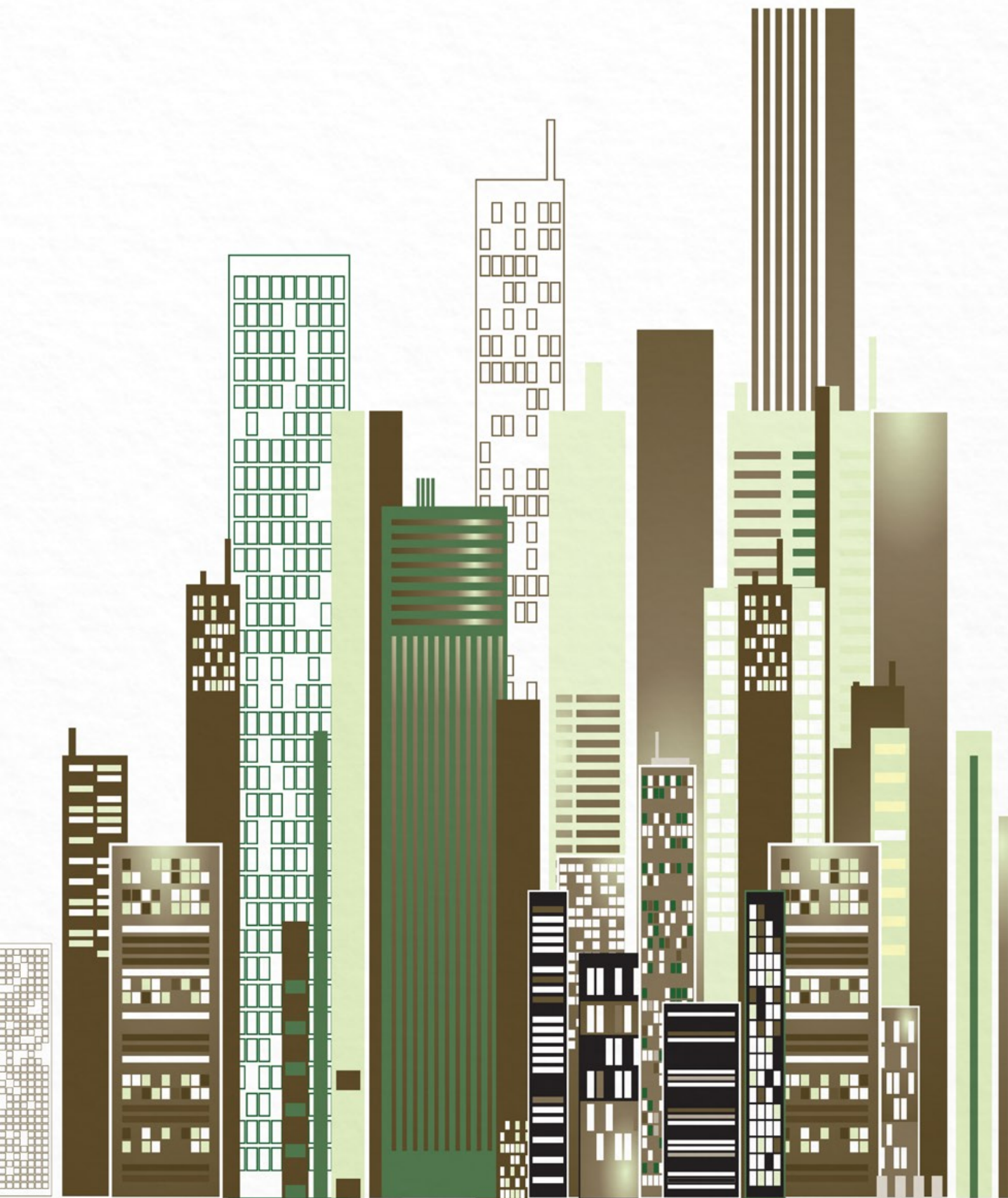


### TREES Criteria

SL5 : Reduce Heat Island Effect

MR5 : Regional Materials





# VẬT LIỆU SCG CHO CÁC CÔNG TRÌNH XANH

PRODUCTS	REDUCE HEAT ISLAND EFFECT	WATER REDUCTION	REDUCE ENERGY CONSUMPTION	RECYCLED CONTENT	REGIONAL MATERIALS	LOW-EMITTING MATERIALS
 <p>CEMENT</p>						
 <p>READY MIXED CONCRETE</p>						
 <p>ROOFING</p>						
 <p>SMARTBOARD</p>						
 <p>SMARTWOOD</p>						
 <p>WHITE CEMENT</p>						
 <p>SKIMCOAT</p>						
 <p>THERMAL INSULATION</p>						
 <p>SANITARY WARES</p>						
 <p>CERAMIC TILES</p>						



Printed with Soy Ink

Printed on Paper from 100% Eco Fiber by SCG Paper

**CONTACT INFORMATION**

Green Solution, Marketing Housing Business

SCG Cement-Building Materials Co., Ltd.

02-586-5010 [scggreenbldg@scg.co.th](mailto:scggreenbldg@scg.co.th)

[www.greenbuilding-material.com](http://www.greenbuilding-material.com)

**SCG Cement Building Materials Vietnam**

An Phu Tower

117 - 119 Ly Chinh Thang, Ward 7, District 3, Ho Chi Minh City

077 555 01 08

[vn.scgbuildingmaterials.com](http://vn.scgbuildingmaterials.com)

\*The actual color of the product might look slightly different from picture due to printing process.

The company reserve rights to change information without prior notice.